



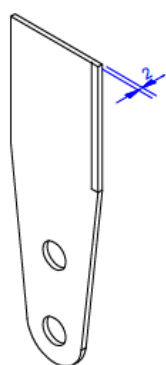
Parts list V-Strong

VS240

V20160205

Wearing parts

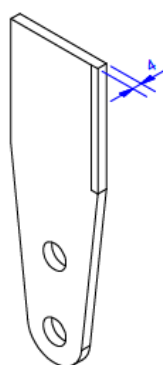
Slijtdelen



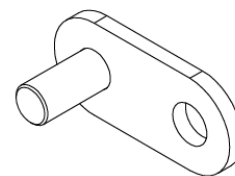
1



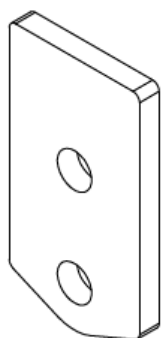
2



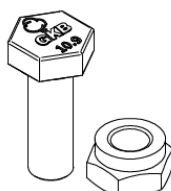
3



4



5



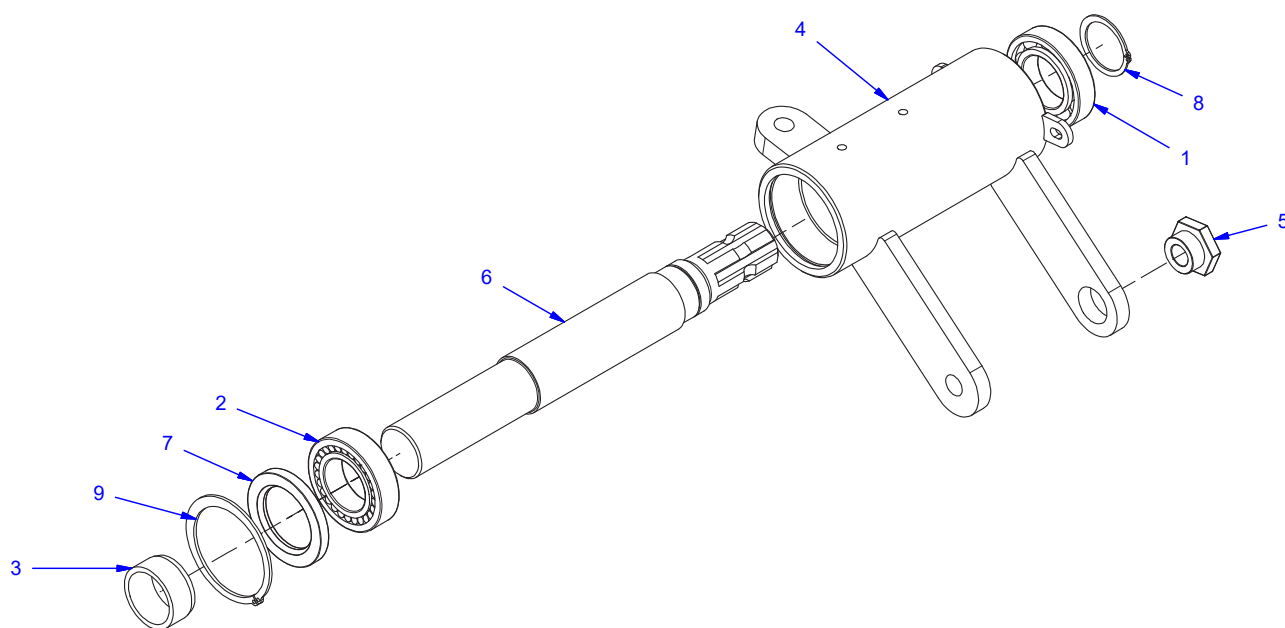
6

Item	Quantity	Part number	Description	Omschrijving
1	46/92*	0103-0002	Vertiblade 2mm tungstone tip	Vertimes 2mm hardmetaal punt
2	46/92*	0103-0001	Vertiblade 3mm tungstone tip	Vertimes 3mm hardmetaal punt
3	46/92*	0103-0003	Vertiblade 4mm tungstone tip	Vertimes 4mm hardmetaal punt
4	92	0101-0001	Quicklock vertiblade	Snelsluiser vertimes
5	46**	0102-0002	counter weight	Balanceergewicht
6	92/184***	0115-0004	Blade bolt + nut M10x1.25x30 10.9	Freesbout M10x1,25x30 10.9 + moer
*	92	0103-0002 / 0103-0001 / 0103-0003	When blades are fitted h.o.h. 25mm	Wanneer de messen h.o.h. 25mm gemonteerd zijn
	46**	0103-0002 / 0103-0001 / 0103-0003	When blades are fitted h.o.h. 50mm	Wanneer de messen h.o.h. 50mm gemonteerd zijn
**	46	0102-0002	When blades are fitted h.o.h. 50mm	Wanneer de messen h.o.h. 50mm gemonteerd zijn
***	92	0115-0004	When blades are fitted with (0101-0001 quicklock vertiblade)	Wanneer de messen gemonteerd zijn met (0101-0001 quicklock vertiblade)
	184	0115-0004	When blades are fitted without (0101-0001 quicklock vertiblade)	Wanneer de messen gemonteerd zijn zonder (0101-0001 quicklock vertiblade)

Tensioning device

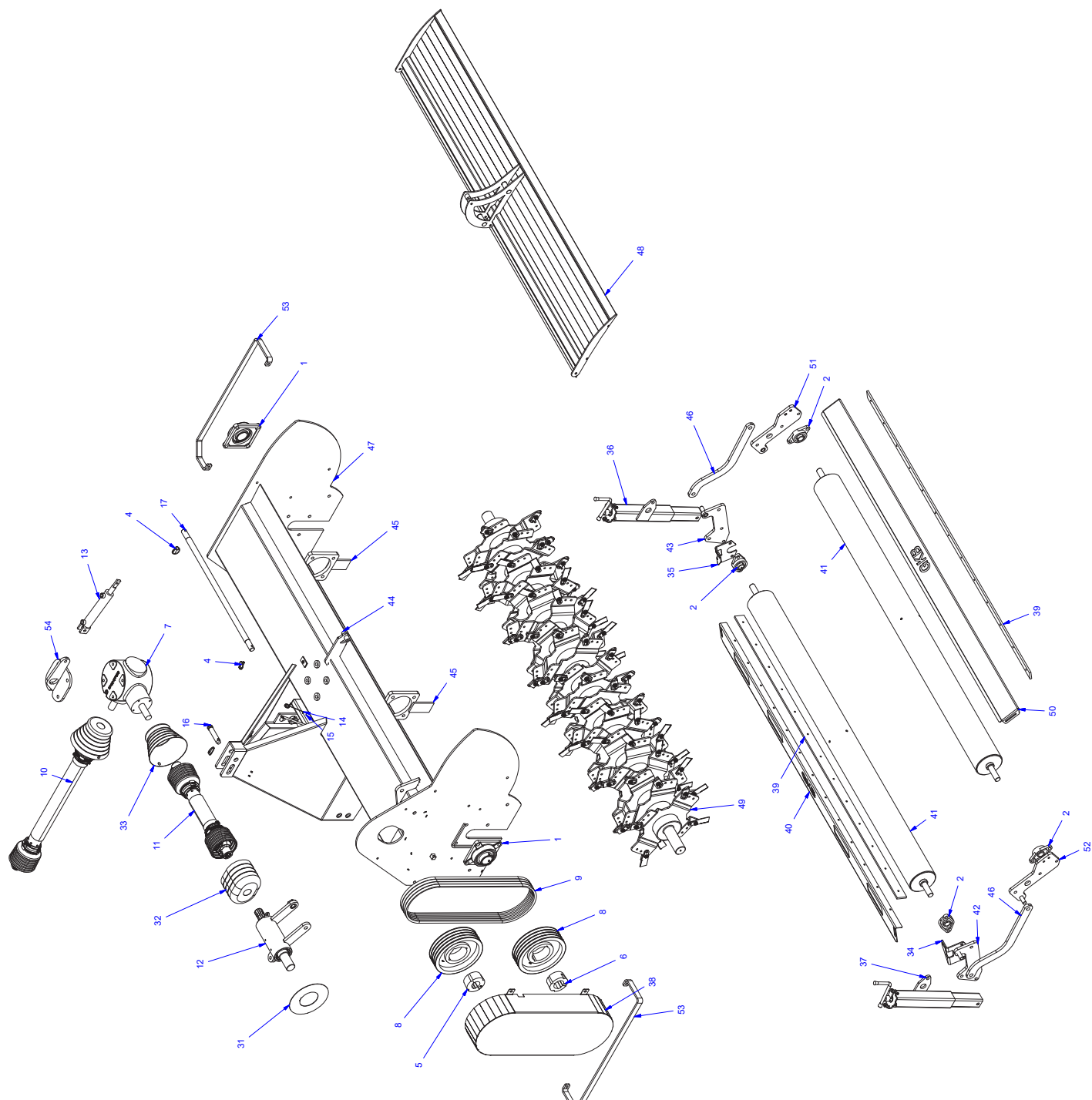
Spanstuk

Item	Quantity	Part number	Description	Omschrijving
1	1	0202-0005	Bearing 6210 2RS	Kogellager 6210 2RS
2	1	0203-0001	Bearing 22210 EX W33 C3	Lager 22210 EX W33 C3
3	1	0411-0001	Spacer Ø50	Afstandsbus ø50
4	1	0411-0003	Housing Tensioning device	Spanhuis
5	1	0411-0004	Bushing excentric D20	Excentrische bus ø20
6	1	0411-0007	Axle tensioning device	As spanstuk
7	1	1202-0002	Oil seal 60x90x10	Oliekeering 60x90x10
8	1	50 x 2 - DIN 471	Circlip as DIN471 Ø50 mm	Seegerring as DIN471 Ø50 mm
9	1	90 x 3 - DIN 471	Circlip housing DIN471 Ø90 mm	Seegerring huis DIN471 Ø90 mm



V-Strong 240

VS240



V-Strong 240

VS240



Item	Quantity	Part number	Description	Omschrijving
1	2	0201-0008	Flange bearing UCF212	Lagerblok UCF212
2	4	0201-0015	Flange bearing UCFL206	Lager UCFL206
3	2	0303-0004	Fuller Fastener DIN705 32 mm	Stelring DIN705 32 mm
4	3	0305-0001	Pin 11mm	borgpen 11mm
5	1	0401-0009	Taperlock bushing 3020 50mm	Klembus taperlock 3020 50mm
6	1	0401-0010	Taperlock bushing 3020 60mm	Klembus taperlock 3020 60mm
7	1	0402-0008	Gearbox S2100157R220	Twkast S2100157R220
8	2	0403-0007	V-pulley 3020 280B4TL	V-snaarschijf 3020 280B4TL
9	4	0404-0005	V-belt XPB 2000	V-snaar XPB 2000
10	1	0409-0002	PTO W2500 L860 1"3/8-6d 1"3/4-6d ring/pen	Aftakas W2500 L860 1"3/8-6d 1"3/4-6d ring/pen
11	1	0409-0003	PTO W2400 L480 2x 1"3/4-6d ring/pen	Aftakas W2400 L480 2x 1"3/4-6d ring/pen
12	1	0411-0016	Tensioning device CB/VS 240	Spanstuk compleet CB/VS 240
13	1	0502-0010	Cilinder 150 ø25/40 DW	Cilinder 150 ø25/40 DW
14	1	1104-0001	Spring PTO holder	Veer Aftakashouder
15	1	1104-0004	PTO holder hook 200mm	Aftakashaak 200mm
16	1	1401-0005	Top link pin 25x95	Topstangpen 25x95
17	1	1401-0014	Pull axle d 30/28 L=930	Trekas d 30/28 L=930
18	1	1501-0011	Safety sticker rick for getting jammed v-belts	Veiligheidssticker klemgevaar snarenkast
19	1	1501-0012	Safety sticker rick for getting jammed hing parts	Veiligheidssticker klemgevaar schanierende delen
20	1	1501-0013	Safety sticker danger of swinging	Veiligheidssticker zwenkgevaar
21	1	1501-0014	Safety sticker catapulting projectiles	Veiligheidssticker wegschieten projectielen
22	2	1501-0015	Safety sticker danger of swinging don't be between machine and tractor	Veiligheidssticker zwenkgevaar niet tussen machine en trekker
23	1	1501-0016	Safety sticker keep saftey cap closed	Veiligheidssticker kap gesloten houden
24	1	1501-0020	Safety sticker 540 RPM	Veiligheidssticker 540rpm
25	2	1501-0023	Sticker patent approved	Veiligheidssticker patent approved
26	2	1501-0024	Altimeter	Hoogtemeter
27	1	1501-0025	Safety sticker composite	Veiligheidssticker 4 samengesteld 1
28	1	1501-0026	Safety sticker composite	Veiligheidssticker 4 samengesteld 2
29	2	1503-0009	GKB Sticker 200 mm	GKB Stikker 200 mm
30	1	1503-0011	GKB Sticker 400 mm	GKB Stikker 400 mm
31	1	1801-0001	Cover tensioning device 110mm	Afdichtplaat spanstuk 110mm
32	1	1801-0006	PTO cover straight 150	Beschermkap aftakas recht 150
33	2	1801-0007	PTO cover taper 150	Beschermkap aftakas taps 150
34	1	CB00.06.001	Mounting scraper left	Bev. schrapper links
35	1	CB00.06.002	Mounting scraper right	Bev. schrapper rechts
36	1	CB00.06.02	Supporting leg right	Steunpoot rechts
37	1	CB00.06.03	Supporting leg left	Steunpoot links
38	1	CB00.07.03	V-belt cover	Snarenkast CB200/240
39	2	CB24.06.001	Scraper 60x10	Schrapper 60x10
40	1	CB24.06.007	Scraper front	Schrapper gezet v
41	2	CB24.06.01	Supporting roll	Draagrol CB240
42	1	CB24.06.02	Hing part supporting roll 1	lassamenstelling scharnierplaat draagrol 1
43	1	CB24.06.03	Hing part supporting roll 2	lassamenstelling scharnierplaat draagrol 2
44	2	VS00.02.005	Pom bushing ø25x6.3 L=25	Pom bus ø25x6.3 L=25
45	2	VS00.05.01	Cover rotor axle	Afdekplaat rotoras
46	2	VS00.06.001	Hing bar Supporting roll extended	scharnierstang draagrol verlengd
47	1	VS24.01	Frame	Framekap VS240
48	1	VS24.02.01	Ground cap	Grondkap
49	1	VS24.05.03	Rotor axle	Rotoras verzet
50	1	VS24.06.002	Scraper back	Schrapper gezet achter
51	1	VS24.06.01	Mounting supporting roll right front VS240	Draagrolhouder RA VS240
52	1	VS24.06.02	Mounting supporting roll right back VS240	Draagrolhouder LA VS240
53	2	VS24.07.002	Distance strip VS240	Afstandhouder VS240
54	1	VS24.07.01	Lifting eye	Hijsoog
55	1	VS240 Stikker	Sticker VS240	Stikker VS240